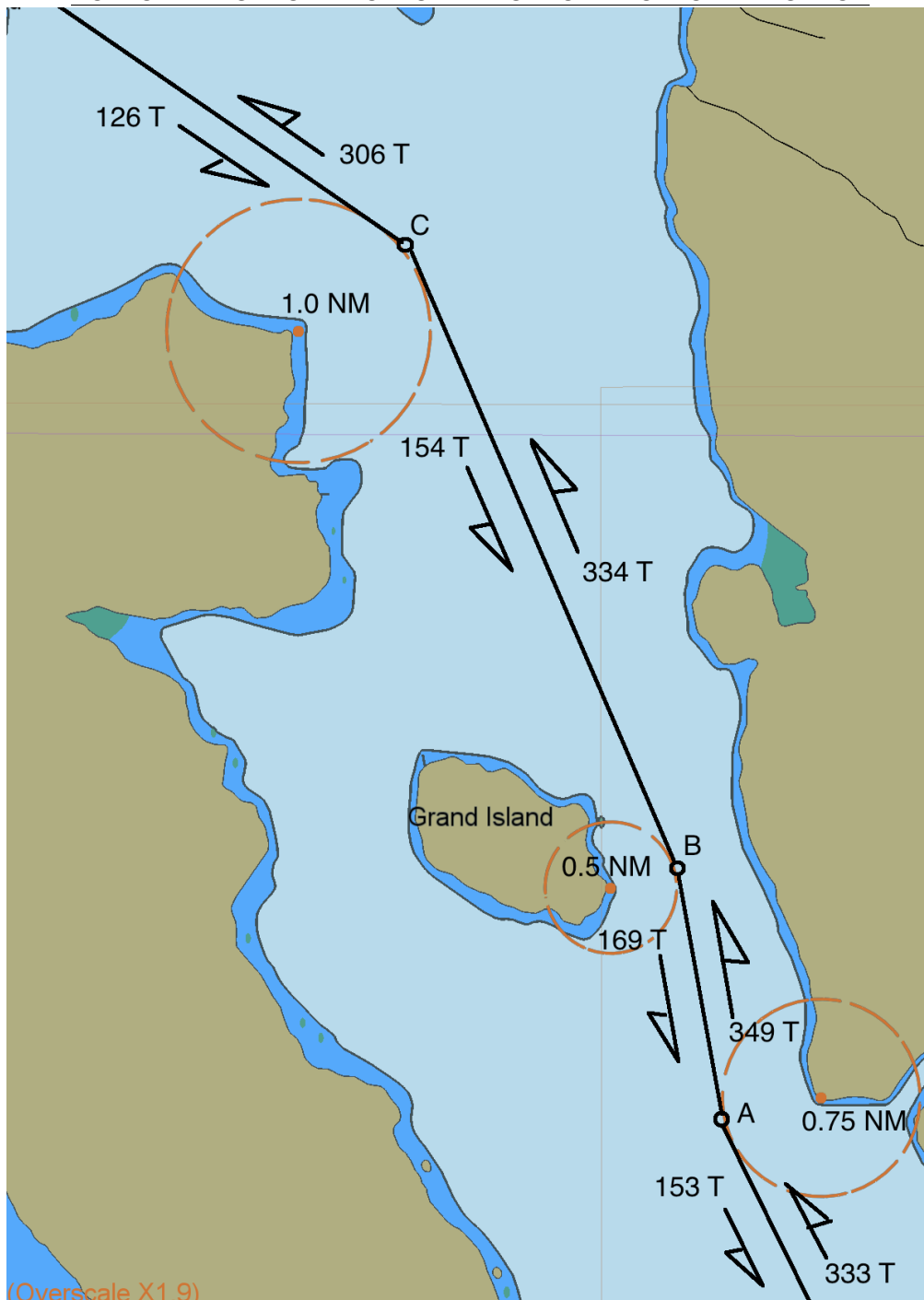


SOUTHEAST ALASKA MARINE SAFETY TASK FORCE MAY 2015
 DEEP-DRAFT TRAFFIC STANDARD TRACKLINES GRAVE PT TO PT ARDEN
 NOT FOR NAVIGATION – NOT FOR NAVIGATION – NOT FOR NAVIGATION



A: 58-03.5N / 134-04.5 W

B: 58-06.1N / 134-05.4W

C: 58-10.2N / 134-09.0W

Voluntary vessel traffic procedures for gillnet fishing conditions and deep-draft ships. Traffic lanes, about 0.2 NM wide, are centered on the tracklines as shown.

Deep-Draft Traffic:

Securite call 30-45 minutes prior to entering area and at regular intervals while transiting the area. Travel along tracklines as much as possible.

Gillnet Fishing Vessels;

Mark net end with lights and radar reflectors;
 Monitor VHF CH 13 & 16 for broadcasts;
 Warn other gillnetters if they appear in the traffic lane and deep-draft ships are approaching.
 Do not place sleep sets within or adjacent to tracklines.