

Sablefish Industry Meeting Northern Southeast Inside (NSEI)

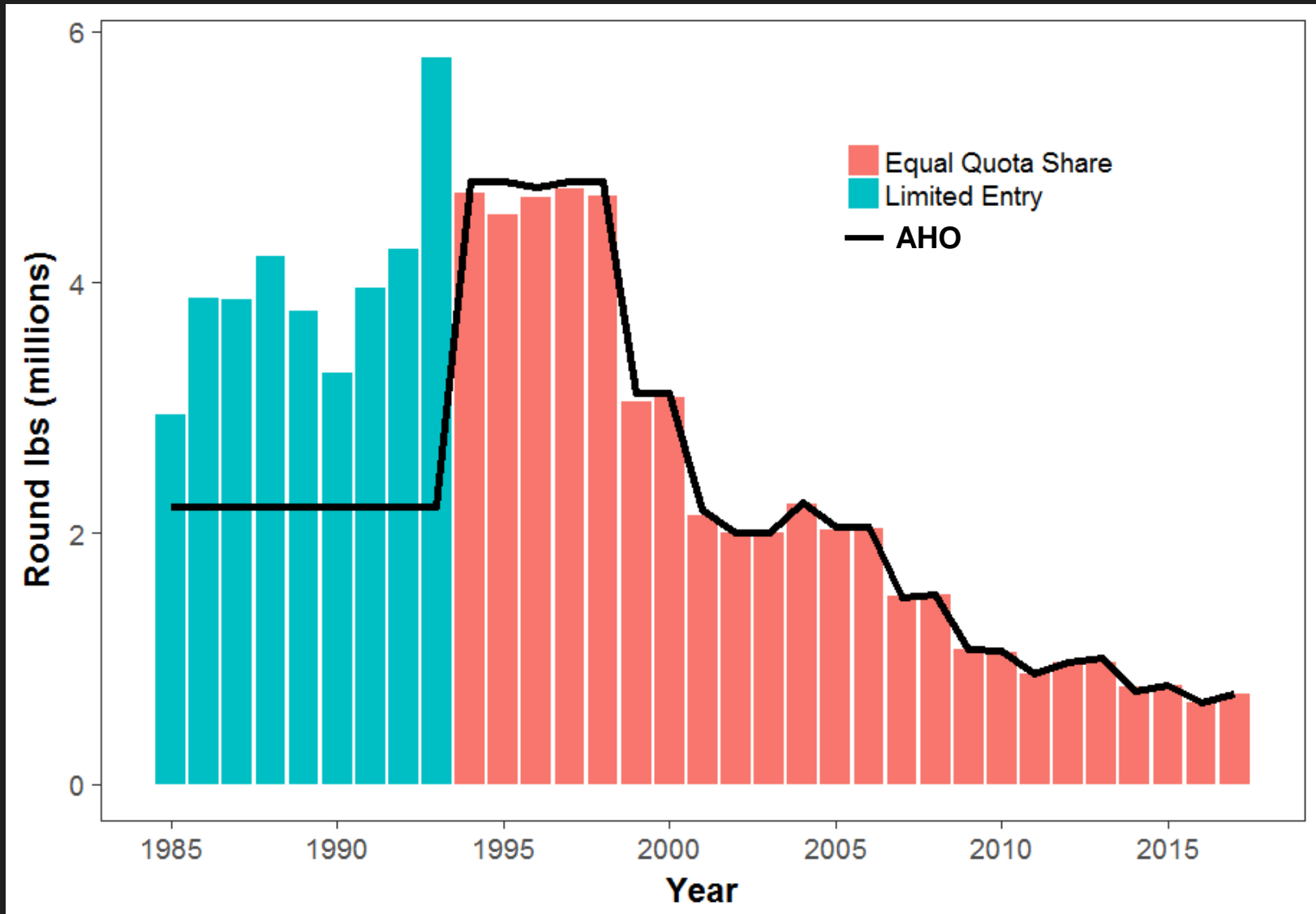


March 7th, 2018
Andrew Olson ADF&G

Agenda

- Introduction—**Andrew Olson (ADF&G)**
- NSEI Fishery & Survey Data Review-**Jane Sullivan (ADF&G)**
- Outlook for 2018 NSEI sablefish quota/NSEI Decrement Review-
Andrew Olson (ADF&G)
- NSEI Future Field Work/Budget Update-**Andrew Olson (ADF&G)**
- Seabird population, bycatch, and deterrent resources- **Rob
Suryan & Anne Marie Eich (NOAA)**
- GOA Federal Sablefish Fishery Stock Status-**Dana Hanselman
(NOAA)**
- ADF&G Graduate Studies Research-**Rhea Ehresmann (ADF&G)**

History of the NSEI Fishery

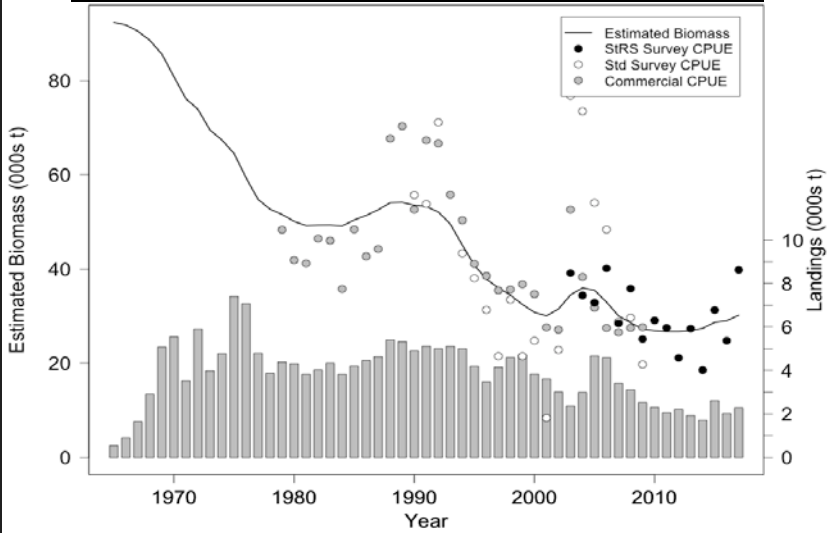


Stock Assessment History

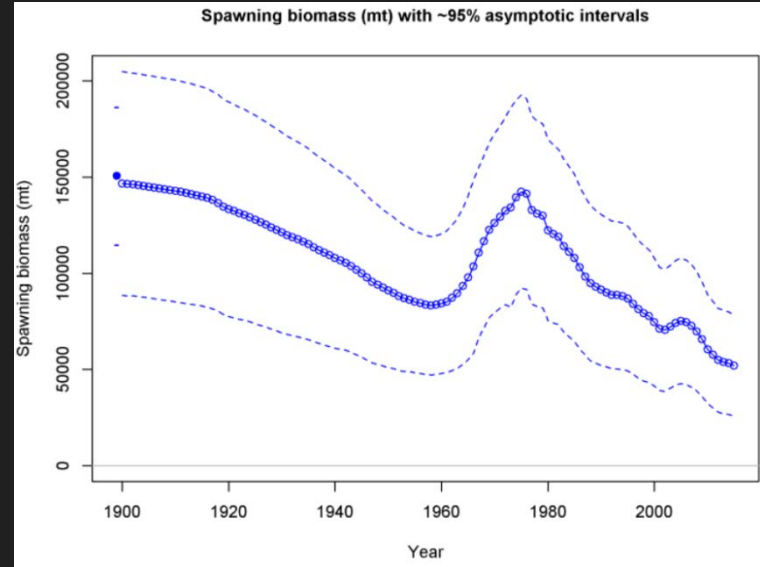
- Survey CPUE (1988–Present)
- Fishery CPUE (1997: logbooks implemented)
- Mark/Recapture Study
 - 1997–1999 tagged fish released from longline survey
 - Concerns over hook shyness
 - 2000–Present, tagged fish released with pots
 - Used to estimate sablefish abundance in conjunction with fishery/survey data to convert biomass/calculate harvest rate

Sablefish Geographic Trends

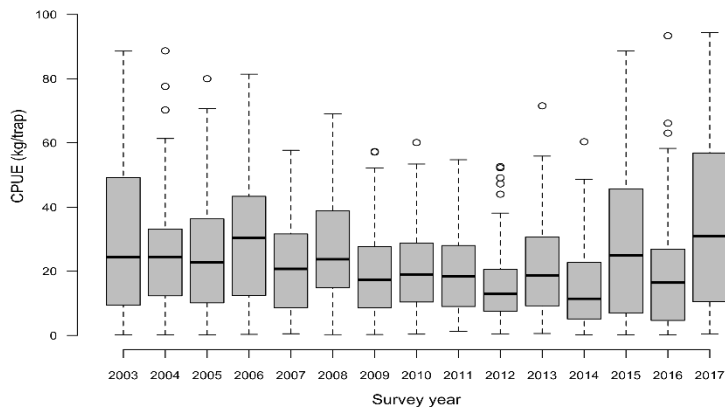
DFO Canada Biomass



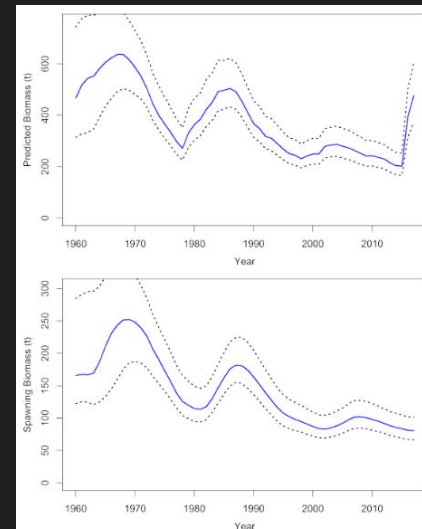
Pacific Coast Biomass



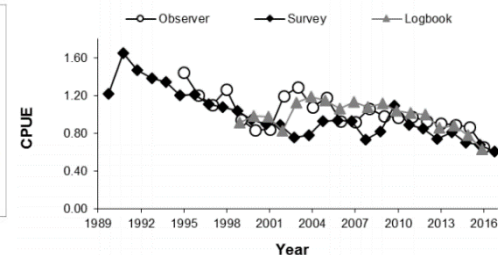
DFO Canada Trap Survey




NOAA Alaska Biomass (outside waters)



East Yakutat/Southeast



2018 AHO Outlook

-  Survey CPUE
- Recruitment signs in fishery/survey
- $F_{50\%}$ Harvest rate policy
- Finalizing analyses for AHO
 - Expect increase
 - Decrements being finalized



Decrements

AHO is calculated by making the following decrements from the ABC:

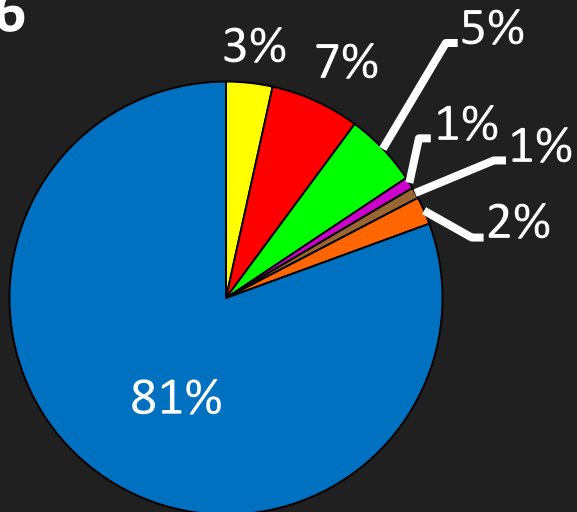
- 1) Est. sablefish bycatch mortality in the commercial halibut fishery
- 2) ADF&G longline survey removals
- 3) Recreational harvest (guided & un-guided)
- 4) Subsistence and personal use harvest
- 5) Est. sablefish discard mortality in directed commercial fishery

Sablefish Decrements 2015 –2017

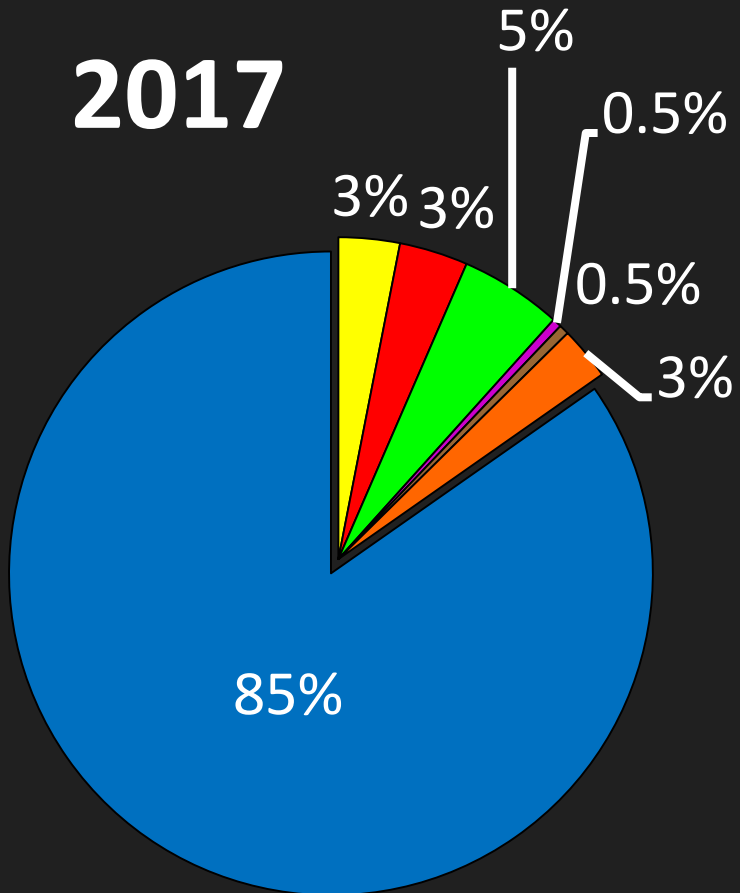
Year Decrement Type (lbs)	2015	2016	2017
Bycatch mortality in halibut fishery	38,963	27,915	26,136
ADF&G longline survey removals (excluding catch retained by permit holders)	74,689	53,914	29,290
Guided recreational harvest	51,910	44,509	43,656
Estimated private recreational harvest (unguided)	5,212	7,015	3,911
Discard mortality in sablefish fishery	9,218	6,719	4,250
Subsistence and personal use	19,741	16,734	22,621
Total Decrements	199,733	156,805	129,863
AHO	786,748	650,754	720,250
# of Permit Holders	78	78	78
EQS	10,087	8,343	9,234

NSEI AHO/Decrements as % of ABC

2016

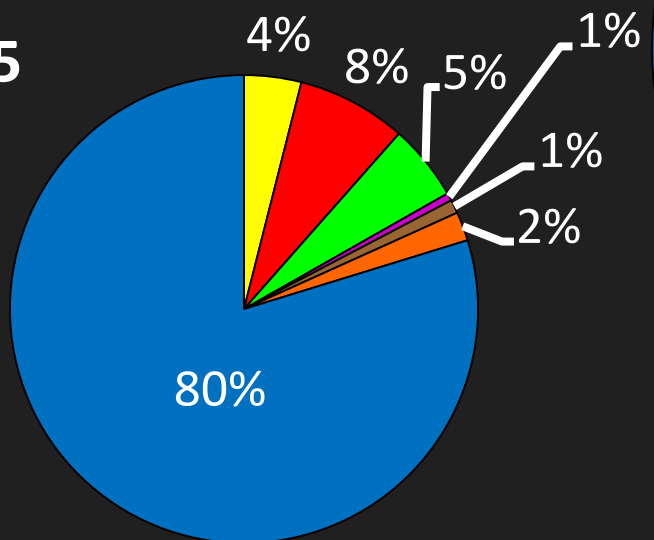


2017



- halibut fishery
- ADF&G longline survey
- guided recreational harvest
- private recreational harvest
- sablefish mortality
- Subs/PU

2015



ADF&G NSEI Tagging Pot Survey

- Goal: Tag 6,000-8,000 sablefish throughout NSEI for recapture during the commercial fishery for abundance estimate
- Surveys conducted in: 2012, 2013, 2015, & 2017 on ADF&G vessel
- 2017 Survey Summary
 - 7,096 sablefish tagged
 - 243–463 fm depth
 - 16.1–40.5"/41–103 cm sablefish length
- 2018 Survey May–June



ADF&G NSEI Longline Survey

- Continue annual cost-recovery LL surveys
 - 3 vessels under contract for next 5 years (2017-2021)
- 3 vessels, with up to 9 permit holders can participate (3 per vessel)
 - Permit holders need to be present when PQS is harvested
 - Reduces survey removal impact and benefits fleet



©NMFS

©NMFS

Budget Update

- Longline Surveys (Cost Recovery)
 - Helps pay for:
 - Longline Surveys
 - 3 vessels in NSEI
 - 2 vessels in SSEI
 - Mark/tag pot survey in NSEI

	Test Fish Recovery			Estimated Survey Costs			
Year	NSEI	SSEI	Total	NSEI Longline	NSEI Pot	SSEI Longline	Total
2016	\$226,388	\$89,771	\$316,159				
2017	\$125,808	\$91,748	\$217,556	\$135,000	\$139,000	\$90,000	\$364,000
2018				\$135,000	\$139,000	\$90,000	\$364,000

2018 BOF Decisions

- **NSEI & SSEI**

- Pot gear in sablefish PU fishery
 - 2 pots per permit and no more than 8 per vessel when 4 or more permits are present on vessel
 - Pots may not be longlined
- Live market of sablefish
- Non-resident sport fish annual limit for all SEAK
 - 4 daily, 4 in possession, 8 fish annual limit

- **SSEI**

- Pots require 2 escape rings on opposing vertical sides with a minimum inside diameter of 4”.
- June 1–November 15 season
 - Both gear types can be used
 - C91C permits are limited to pots only

Questions?

Agenda

- ~~• Introduction—Andrew Olson (ADF&G)~~
- ~~• NSEI Fishery & Survey Data Review—Jane Sullivan (ADF&G)~~
- ~~• Outlook for 2017 NSEI sablefish quota/NSEI Decrement Review—Andrew Olson (ADF&G)~~
- ~~• NSEI Future Field Work/Budget Update—Andrew Olson (ADF&G)~~
- Seabird population, bycatch, and deterrent resources- **Rob Suryan & Anne Marie Eich (NOAA)**
- GOA Federal Sablefish Fishery Stock Status-**Dana Hanselman (NOAA)**
- ADF&G Graduate Studies Research-**Rhea Ehresmann (ADF&G)**