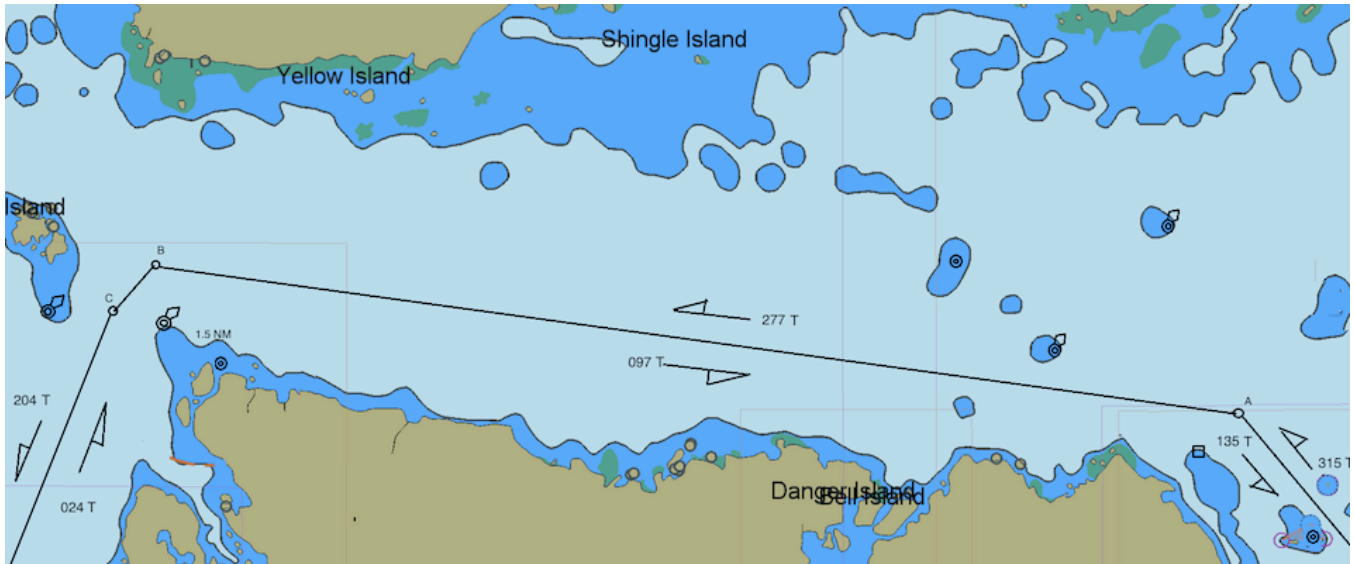


SOUTHEAST ALASKA MARINE SAFETY TASK FORCE MAY 2015
SUMNER STRAIT DEEP-DRAFT TRAFFIC STANDARD TRACKLINES
NOT FOR NAVIGATION – NOT FOR NAVIGATION – NOT FOR NAVIGATION



A: 56-21.0N / 133-09.5 W

B: 56-23.0N / 133-38.7W

C: 56-22.5N / 133-39.9 W

Voluntary vessel traffic procedures for gillnet fishing conditions and deep-draft ships. Traffic lanes, about 0.2 NM wide, are centered on the tracklines as shown.

REFERENCE COAST PILOT 8

Deep-Draft Traffic:

Secure call 30-45 minutes prior to entering area and at regular intervals while transiting the area. Travel along tracklines as much as possible.

Gillnet Fishing Vessels;

Mark net end with lights and radar reflectors;
Monitor VHF CH 13 & 16 for broadcasts;
Warn other gillnetters if they appear in the traffic lane and deep-draft ships are approaching.
Do not place sleep sets within or adjacent to tracklines.
Provide for two-way traffic of large vessels along the designated tracklines.