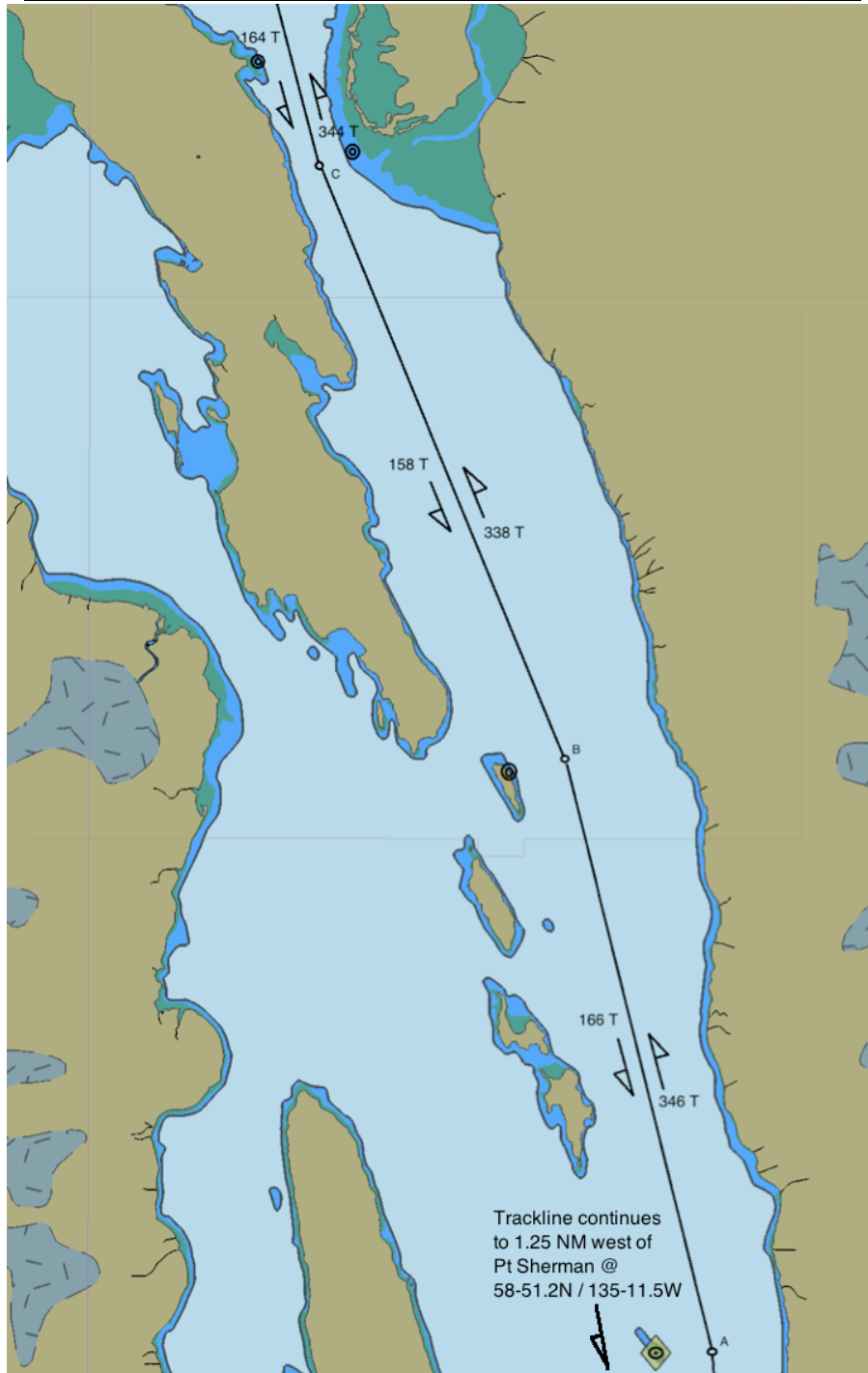


SOUTHEAST ALASKA MARINE SAFETY TASK FORCE MAY 2015
 UPPER LYNN CANAL DEEP-DRAFT TRAFFIC STANDARD TRACKLINES ELDRED ROCK TO BATTERY PT.
 NOT FOR NAVIGATION – NOT FOR NAVIGATION – NOT FOR NAVIGATION



A: 58-58.2N / 135-12.1 W

B: 59-04.7N / 135-15.0W

C: 59-11.7N / 135-20.7W

Voluntary vessel traffic procedures for gillnet fishing conditions and deep-draft ships. Traffic lanes, about 0.2 NM wide, are centered on the tracklines as shown.

Deep-Draft Traffic:

Securite call 30-45 minutes prior to entering area and at regular intervals while transiting the area.
 Travel along tracklines as much as possible.

Gillnet Fishing Vessels;

Mark net end with lights and radar reflectors;
 Monitor VHF CH 13 & 16 for broadcasts;
 Warn other gillnetters if they appear in the traffic lane and deep-draft ships are approaching.
 Do not place sleep sets within or adjacent to tracklines.