

2019 Post Season Review



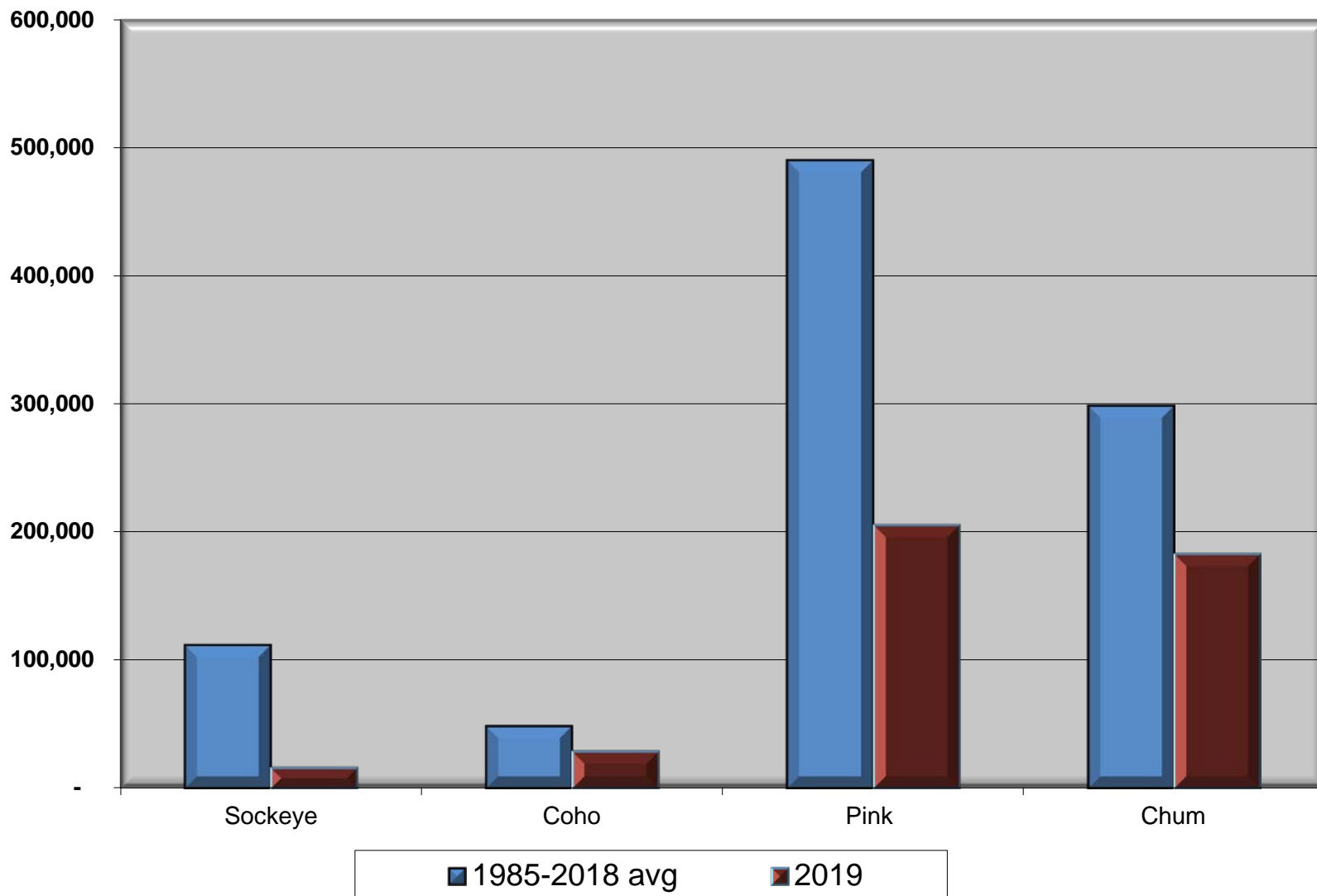
Section 1-B Drift Gillnet

Justin Breese and Whitney Crittenden

Ketchikan Net Harvests – 2019 – All Fisheries

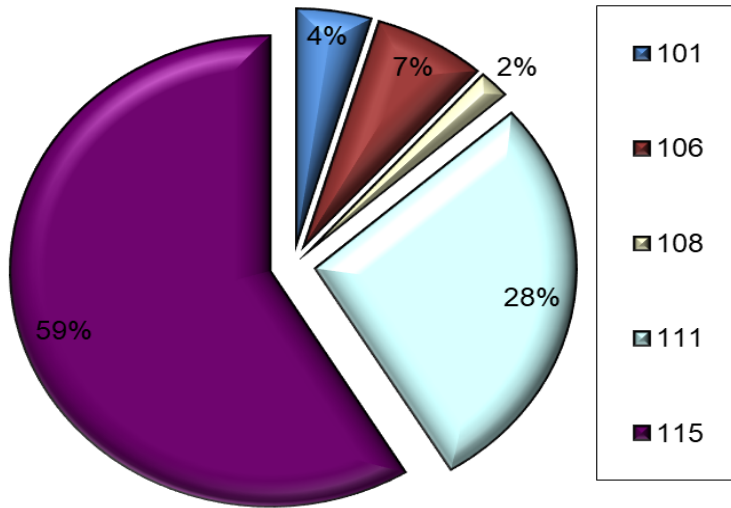
Fishery	Chinook	Sockeye	Coho	Pink	Chum	Totals
Section 1-B GN	1,313	15,986	28,800	204,971	182,457	433,527
District 1 PS	722	38,093	24,809	3,507,893	224,564	3,796,081
District 2 PS	585	33,879	41,270	4,168,341	398,866	4,642,941
District 3 PS	218	24,193	31,981	2,819,188	113,970	2,989,550
District 4 PS	7,174	270,993	77,592	3,528,008	175,211	4,058,978
Neets Bay THA GN	3,092	5	-	44	428	3,569
Neets Bay THA PS	6,027	14	6	131	979	7,157
Nakat THA GN	67	218	9,056	7,616	89,385	106,342
Kendrick THA PS	59	862	753	16,248	82,627	100,549
Carroll THA GN	582	-	-	-	3	585
Carroll THA PS	1,017	-	9	11	59	1,096
Annette Island GN	505	2,255	14,169	307,147	58,249	381,762
Annette Island PS	188	7,887	3,433	932,514	39,437	984,022
Totals	21,549	394,385	231,878	15,492,112	1,366,235	17,506,159

Section 1-B Annual Harvest by Species 1985-2018 Avg vs. 2019

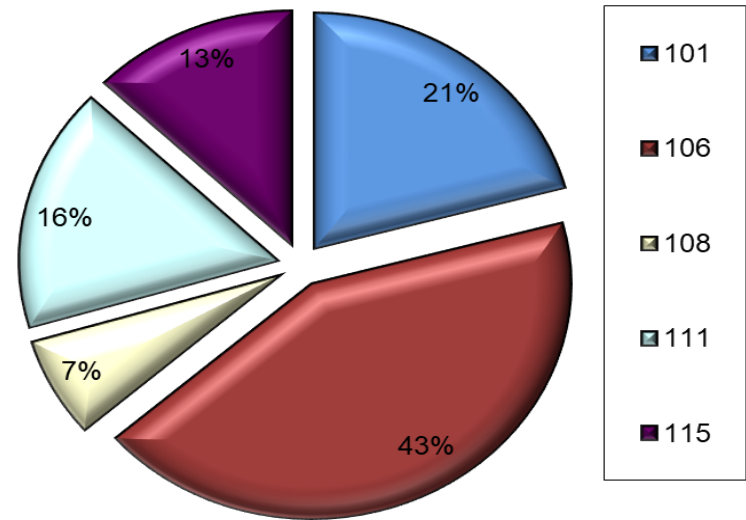


2019 Section 1-B Harvest by District (no THA)

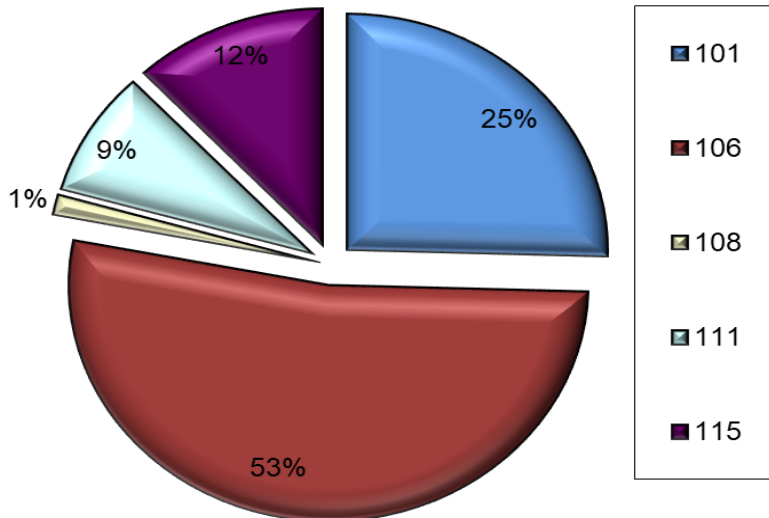
2019 Sockeye Harvest by Gillnet District



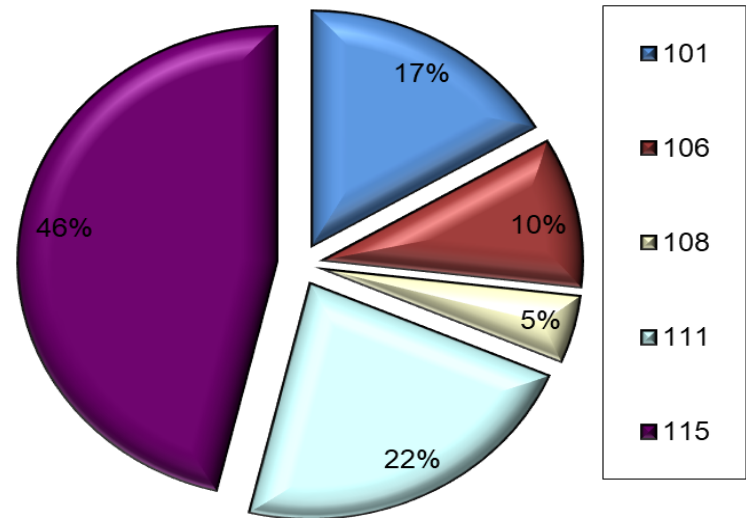
2019 Coho Harvest by Gillnet District



2019 Pink Harvest by Gillnet District



2019 Chum Harvest by Gillnet District



2019 Section 1-B Drift Gillnet – Harvest by Opening

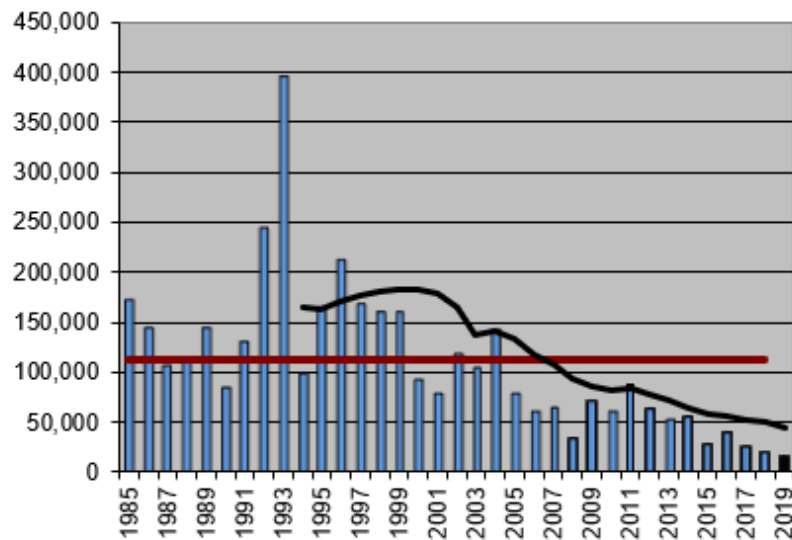
	Opening	Chinook	Sockeye	Coho	Pink	Chum	Boats	Hours
Sockeye & chum management stat weeks 25-29	25	260	512	361	582	771	30	96
	26	423	1,466	269	3,481	2,899	33	96
	27	334	1,508	175	10,463	5,911	38	96
	28	98	1,486	363	25,954	19,666	41	96
	29	41	990	232	22,670	17,140	44	96
Pink salmon management stat weeks 30-35	30	57	2,347	438	30,715	20,593	38	96
	31	61	3,779	1,595	35,060	28,600	39	120
	32	22	2,098	1,243	34,883	23,559	35	120
	33	6	964	1,295	30,866	12,069	32	120
	34	1	193	1,592	8,045	22,854	20	120
Fall chum & coho management stat weeks 36-40	35	3	504	4,134	2,132	20,318	35	120
	36	2	102	2,665	90	4,462	33	96
	37	4	32	5,049	26	2,634	29	96
	38	1	4	5,640	4	830	24	96
	39	0	0	2,758	0	142	13	96
	40	0	1	991	0	9	7	96
Total		1,313	15,986	28,800	204,971	182,457	57	1,656

Ranked 35 of 35 during treaty period

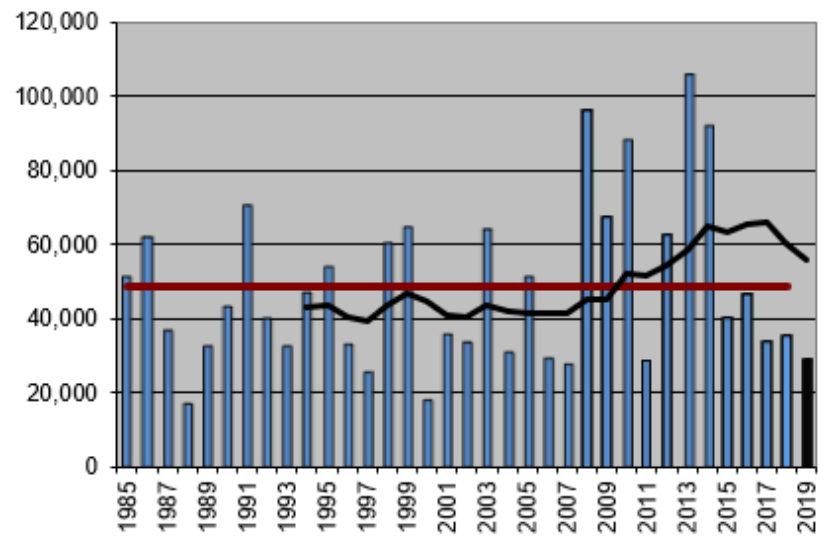
2rd lowest sockeye catch on record

2019 Section 1B – Annual Harvest by Species

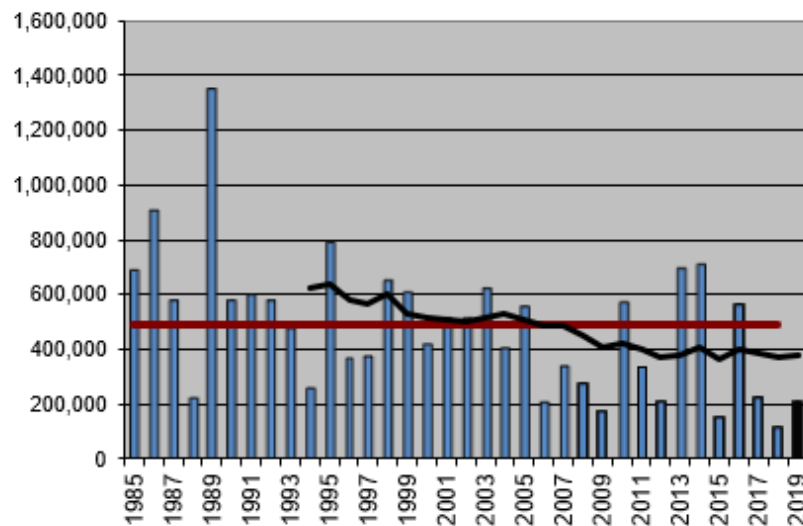
Section 1-B Gillnet - Sockeye Harvest



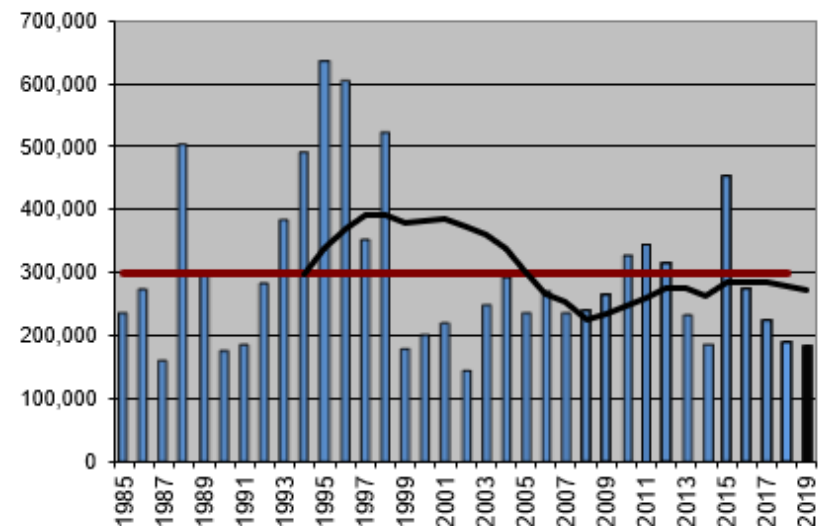
Section 1-B Gillnet - Coho Harvest



Section 1-B Gillnet - Pink Harvest

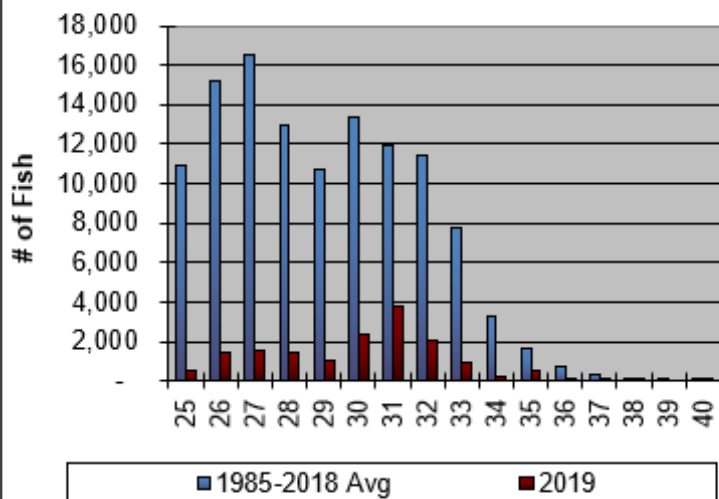


Section 1-B Gillnet - Chum Harvest

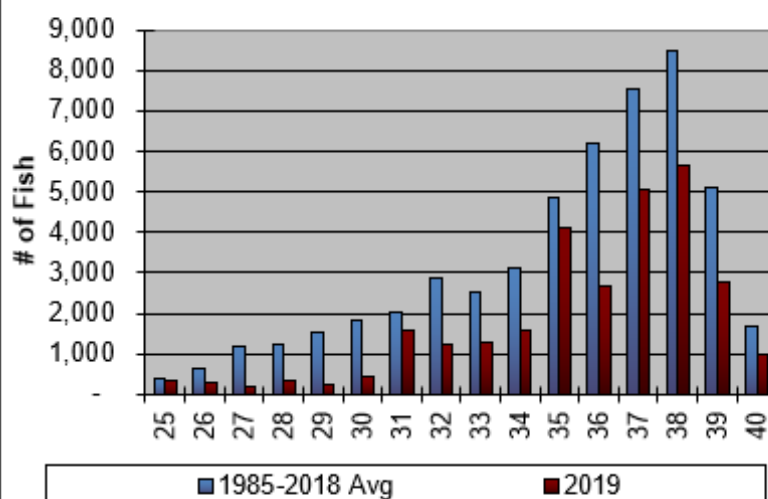


2019 Section 1-B – Weekly Harvest

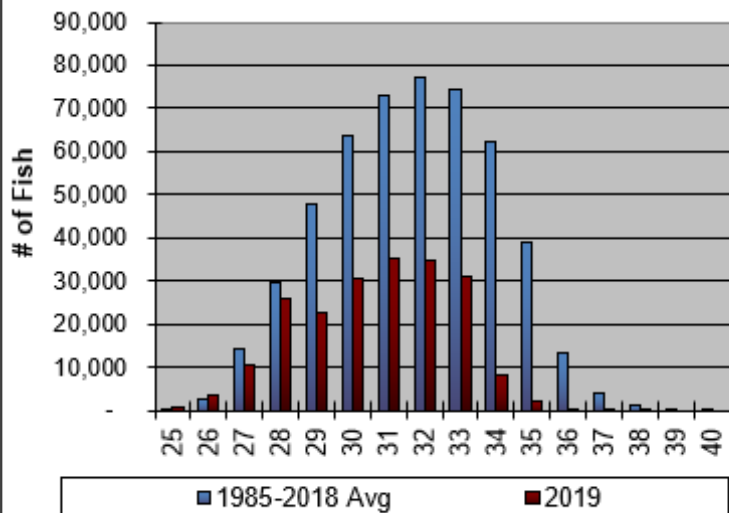
**Section 1-B Weekly Sockeye Harvest
1985-2018 vs 2019**



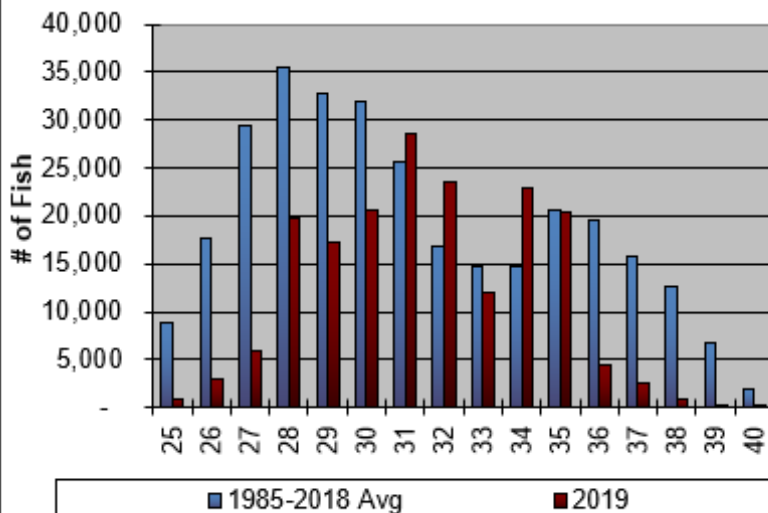
**Section 1-B Weekly Coho Harvest
1985-2018 vs 2019**



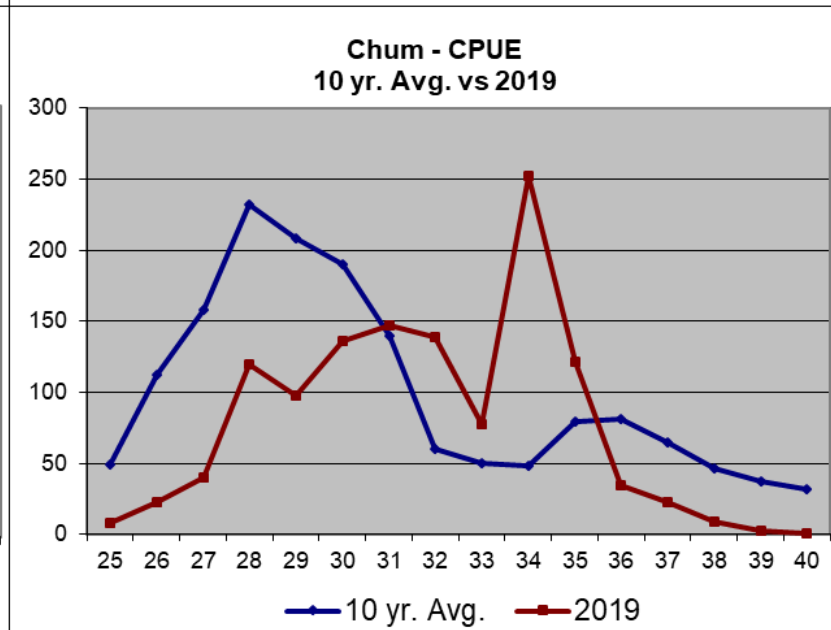
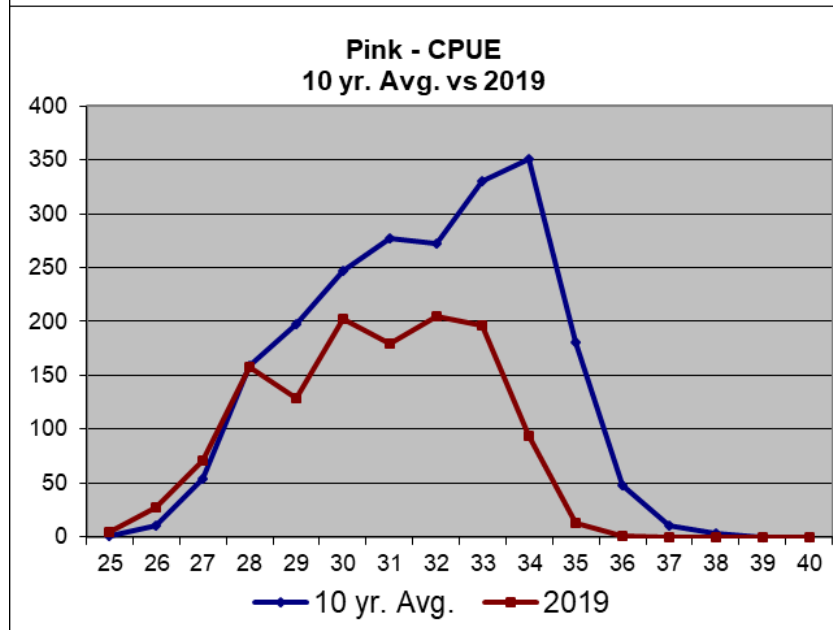
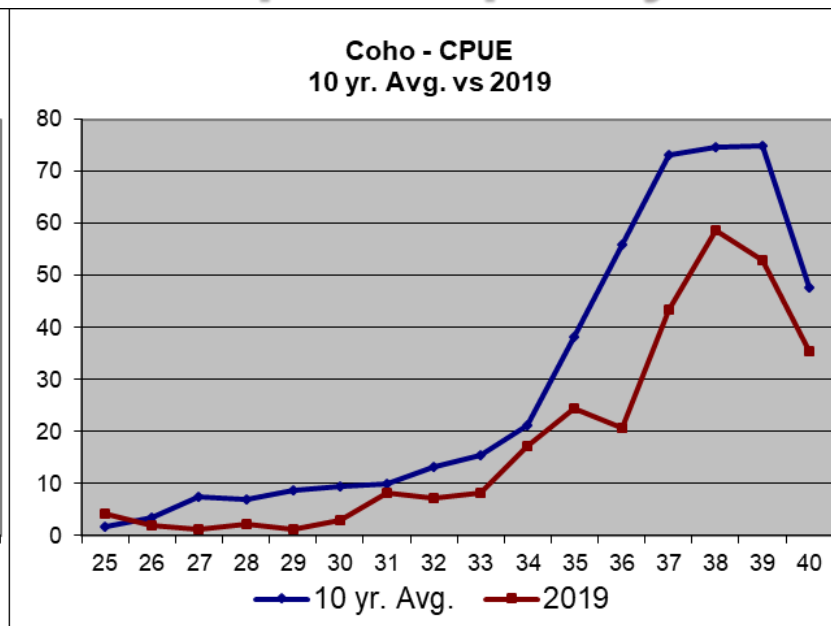
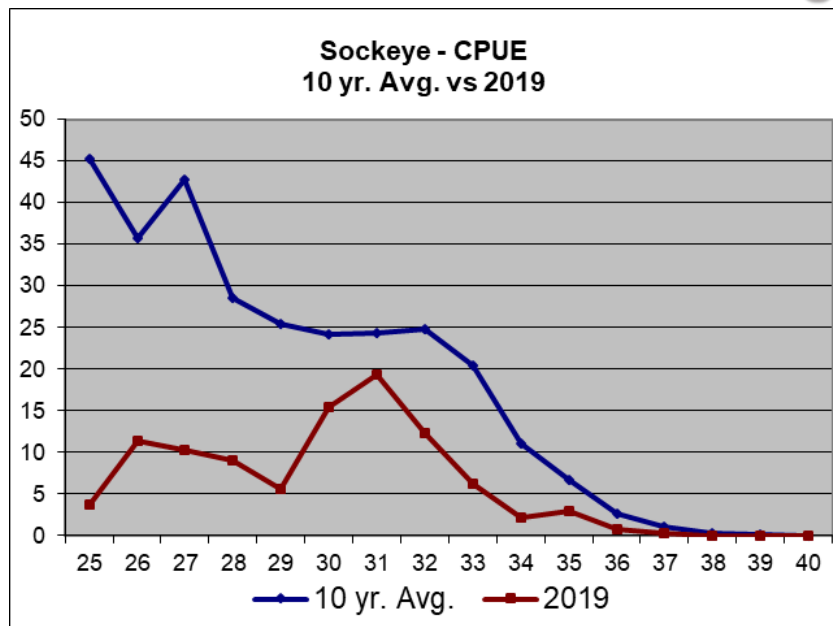
**Section 1-B Weekly Pink Harvest
1985-2018 vs 2019**



**Section 1-B Weekly Chum Harvest
1985-2018 vs 2019**

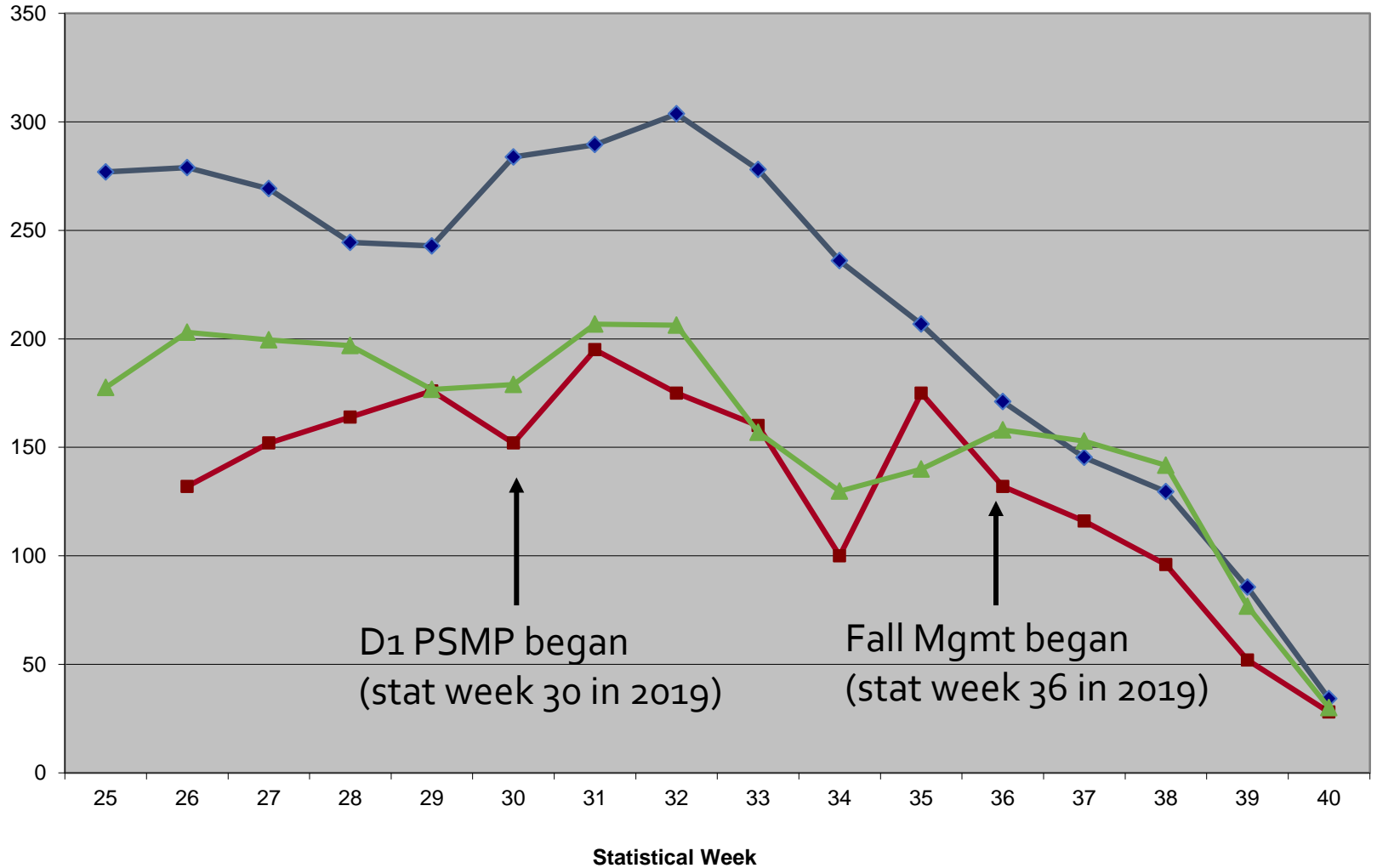


2019 Section 1-B – Average Harvest per boat per day



2019 Section 1-B Drift Gillnet – Fishing Time

Section 1-B Drift Gillnet Boat Day Comparison 1985-2018 vs 2019



Nakat Inlet THA (Subdistrict 101-10)

Nakat Inlet THA Forecast for 2019

254,500 Summer Chum

197,100 Fall Chum

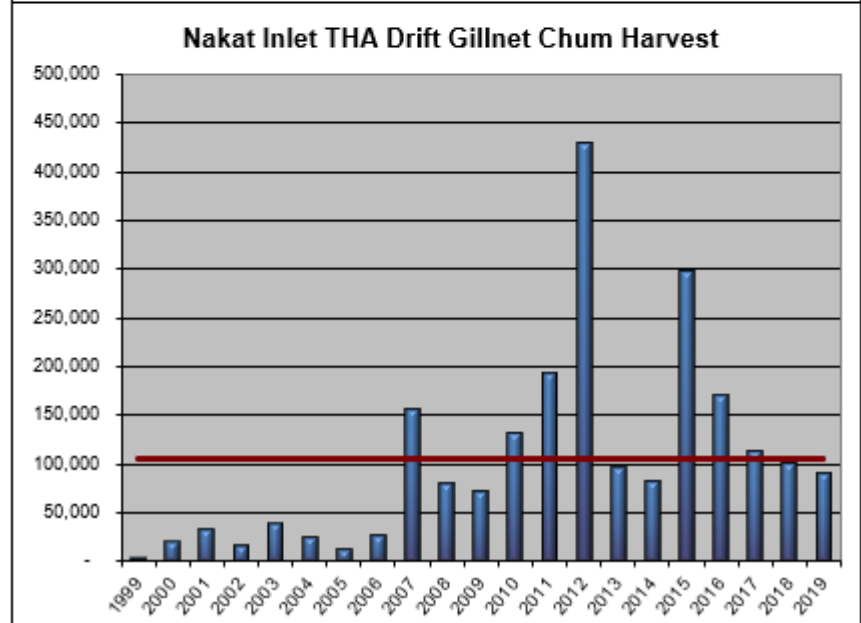
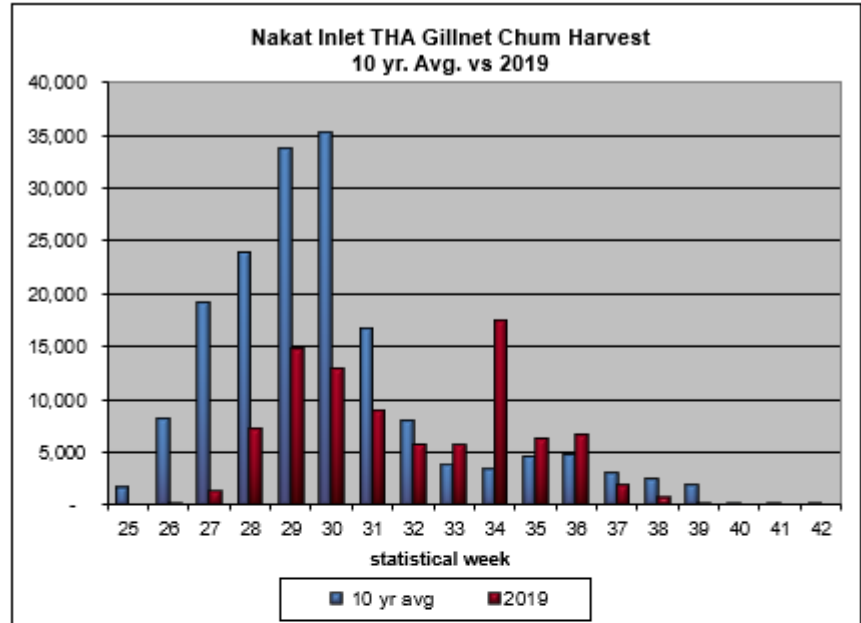
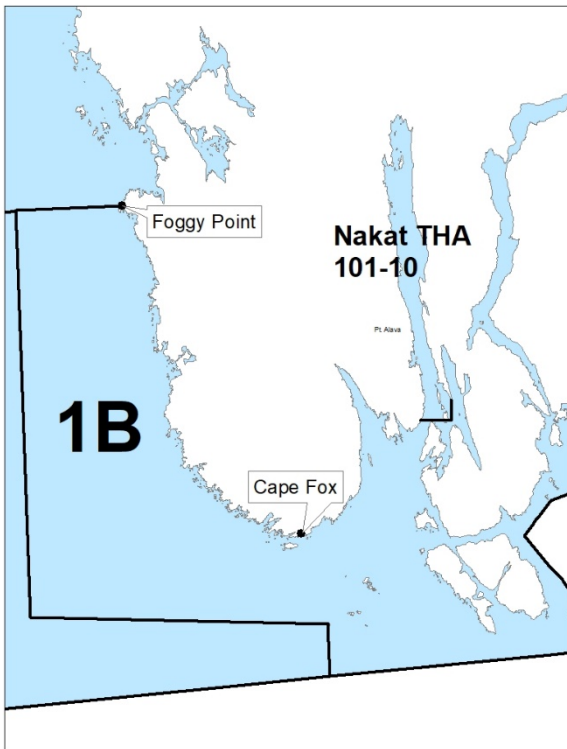
Total Enhanced Nakat Chum Harvest

Gillnet CP 88,000

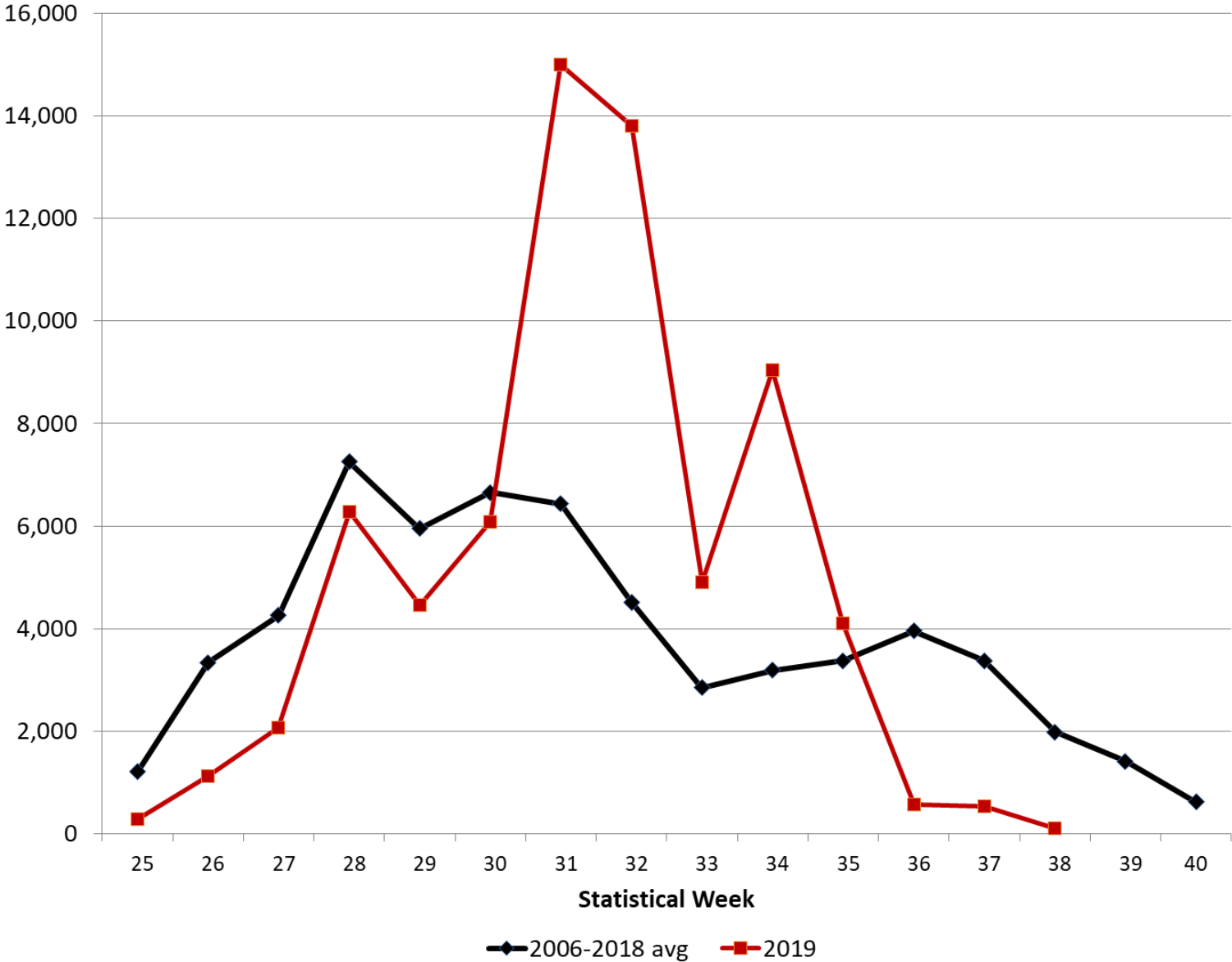
Seine CP 15,000

THA – Gillnet 89,000

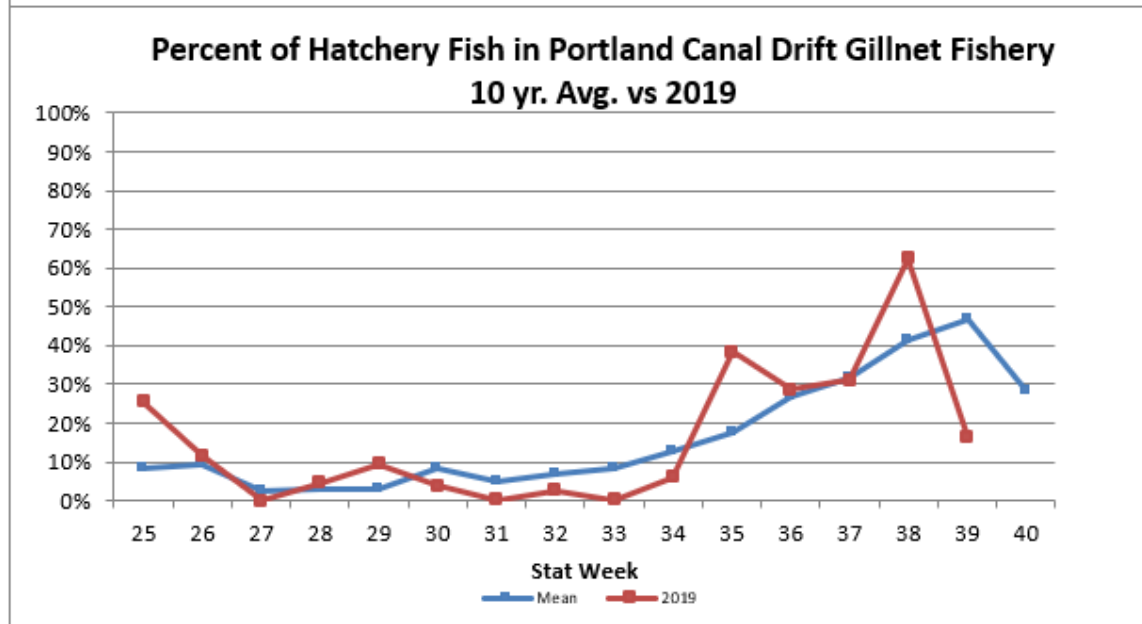
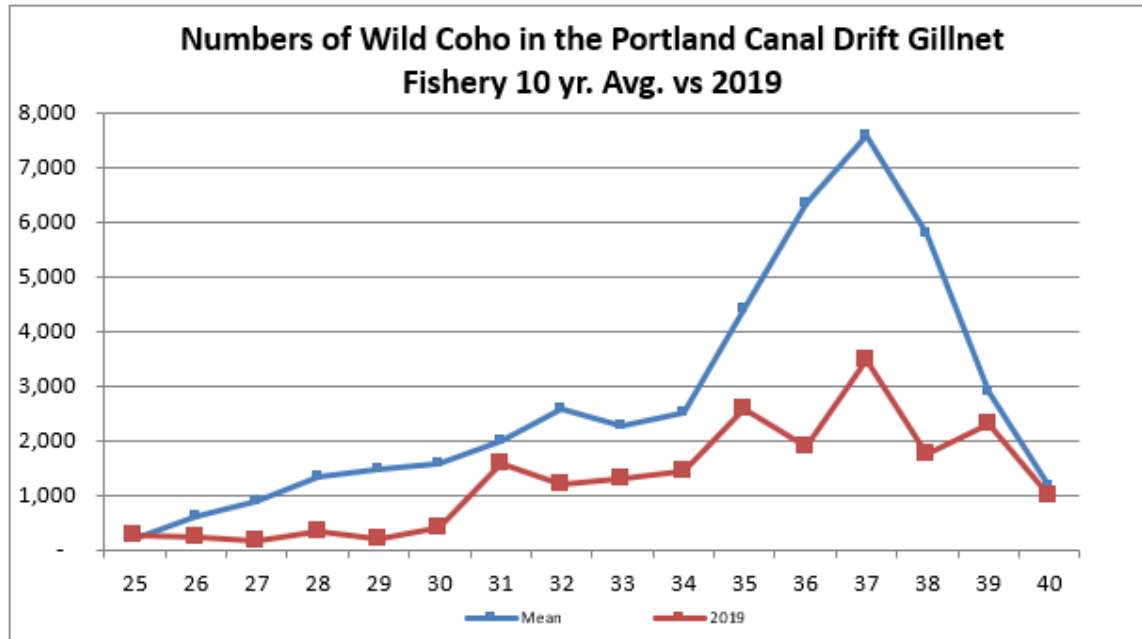
Total ~ 192,000 Falls and summers



Section 1-B Drift Gillnet - Harvest of Unmarked Chum Salmon



2019 Section 1-B Drift Gillnet – Wild vs Hatchery Coho



2019 Peak coho salmon helicopter survey counts

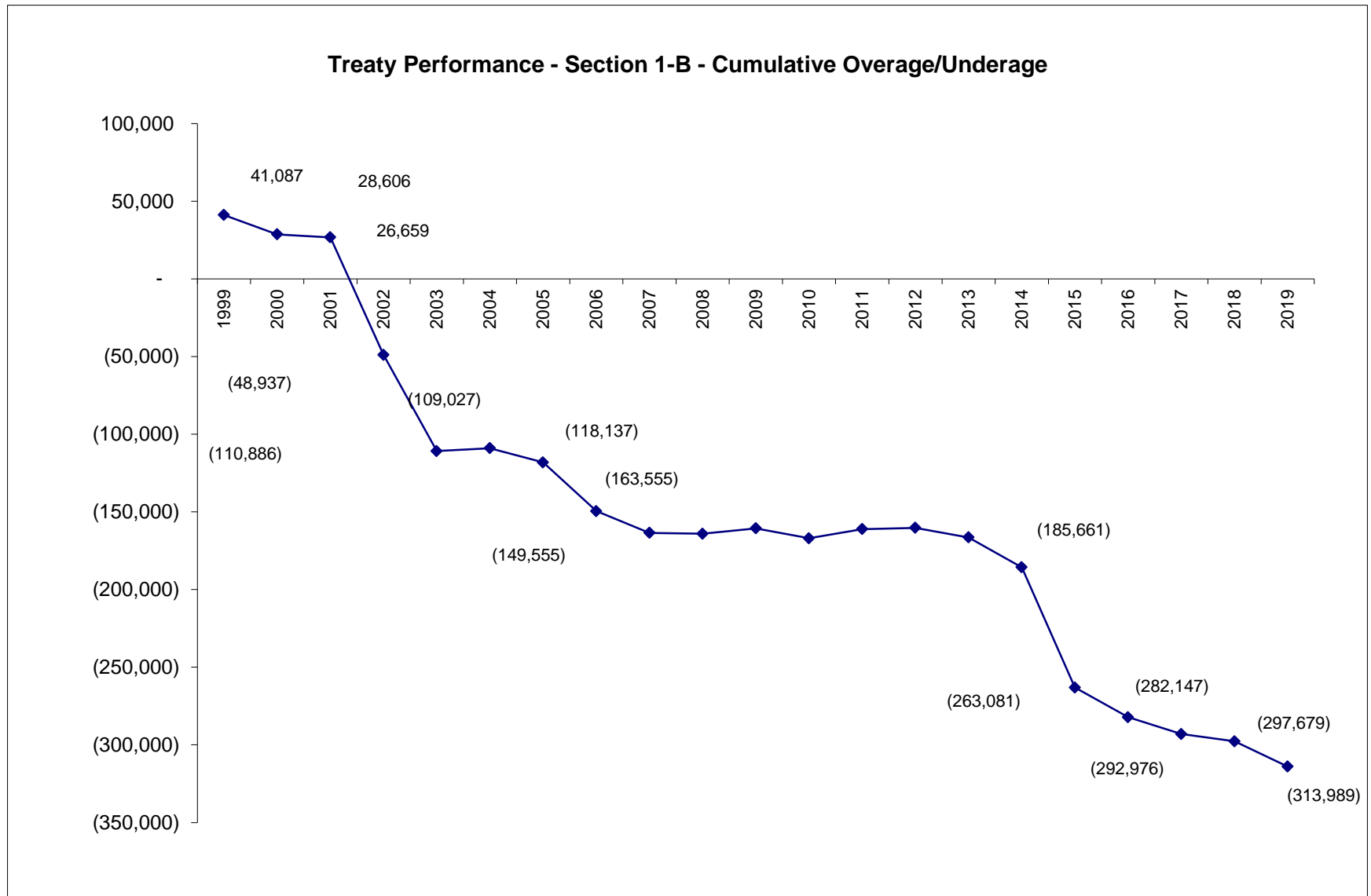
Combined survey count is the sum of counts and interpolated values. Interpolated values are shown in bold.

	2002	2003	2004	2005	2006	2007	2008	2009	2010	2011	2012	2013	2014	2015	2016	2017	2018	Average	2019
Herman Creek	88	242	150	510	165	134	115	160	85	100	25	221	425	20	160	40	75	131	240
Grant Creek	138	197	230	300	124	75	55	330	102	94	60	138	80	200	25	167	55	125	60
Eulachon River	1,105	875	801	1,240	190	298	570	330	370	350	400	536	50	550	810	540	280	422	200
Klahini River	20	39	170	360	176	35	25	340	68	75	175	138	660	136	450	280	70	239	115
Indian River	940	690	935	890	280	245	1,250	750	880	175	170	864	1,500	1,200	370	850	610	737	420
Barrier Creek	70	57	250	190	30	15	23	110	90	74	40	164	242	146	90	20	95	107	20
King Creek	700	1,140	640	810	405	290	420	1,050	570	110	680	602	850	550	540	100	595	565	800
Choca Creek	220	380	180	270	130	210	100	100	190	85	110	200	400	200	315	240	110	195	700
Carroll River	270	427	455	500	272	171	613	1,100	202	225	330	215	220	450	750	285	160	394	60
Blossom River	1,359	1,940	1,005	3,680	2,300	990	7,100	1,041	350	1,235	2,400	2,140	2,000	2,310	3,070	3,100	3,100	2,075	2,200
Keta River	1,368	1,934	1,200	3,290	645	970	2,524	315	550	739	3,300	1,560	1,300	1,470	2,470	2,450	3,300	1,745	570
Marten River	2,302	1,980	1,835	1,130	335	351	925	1,675	350	350	2,650	2,370	2,661	1,555	2,120	1,675	1,750	1,716	1,410
Humpback Creek	2,004	214	1,230	500	260	3	2,600	700	200	850	360	530	1,110	210	280	830	864	593	600
Tombstone River	1,639	1,745	823	1,170	1,600	701	360	225	650	726	1,250	1,340	5,000	1,035	1,970	980	2,700	1,588	500
Hugh Smith Lake - weir count	3,291	1,510	840	1,732	891	1,244	1,741	2,282	2,878	2,137	1,908	3,048	3,993	967	980	1,280	619	2,009	1,300
Combined Survey Count	15,514	13,369	10,744	16,572	7,803	5,732	18,421	10,508	7,534	7,326	13,858	14,066	20,491	10,999	14,400	12,837	14,383	12,640	9,195

2019 Section 1-B – Treaty Performance (preliminary)

	Nass River Total Return	Nass River Escapement	Allowable Nass River AAH	Allowable D1 GN Harvest (13.8%)	Total Sockeye Harvest	Actual Nass River Alaska Harvest	Overage Underage Per Year	Cumulative overage / - underage
1999	842,806	200,000	642,806	88,707	160,028	129,794	41,087	41,087
2000	625,982	200,000	425,983	58,786	94,651	46,305	(12,481)	28,606
2001	580,611	167,253	413,358	57,043	80,041	55,096	(1,947)	26,659
2002	1,403,975	200,000	1,203,975	166,149	120,353	90,553	(75,596)	(48,937)
2003	1,177,472	200,000	977,472	134,891	105,263	72,942	(61,949)	(110,886)
2004	986,095	200,000	786,095	108,481	142,357	110,340	1,859	(109,027)
2005	666,877	200,000	466,877	64,429	79,725	55,319	(9,110)	(118,137)
2006	775,112	200,000	575,112	79,365	62,770	47,948	(31,417)	(149,555)
2007	602,210	164,747	437,463	60,370	66,822	46,369	(14,001)	(163,555)
2008	380,397	200,000	180,397	24,895	34,113	24,359	(536)	(164,091)
2009	575,336	200,000	375,336	51,796	69,859	55,270	3,474	(160,618)
2010	438,941	200,000	238,941	32,974	62,651	26,613	(6,361)	(166,979)
2011	556,710	200,000	356,710	49,226	88,618	55,122	5,896	(161,083)
2012	476,818	200,000	276,818	38,201	62,342	38,983	782	(160,300)
2013	501,428	200,000	301,428	41,597	54,589	35,471	(6,126)	(166,426)
2014	549,685	200,000	349,685	48,257	55,828	29,022	(19,235)	(185,661)
2015	868,744	200,000	668,744	92,287	28,155	14,867	(77,420)	(263,081)
2016	442,420	200,000	242,420	33,454	39,912	14,388	(19,066)	(282,147)
2017	368,653	200,000	168,653	23,274	25,073	12,445	(10,829)	(292,976)
2018	315,985	200,000	115,985	16,006	19,920	11,303	(4,703)	(297,679)
2019	400,000	200,000	200,000	27,600	15,986	11,290	(16,310)	(313,989)

2019 Section 1-B – Treaty Performance (preliminary)



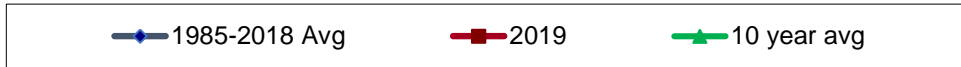
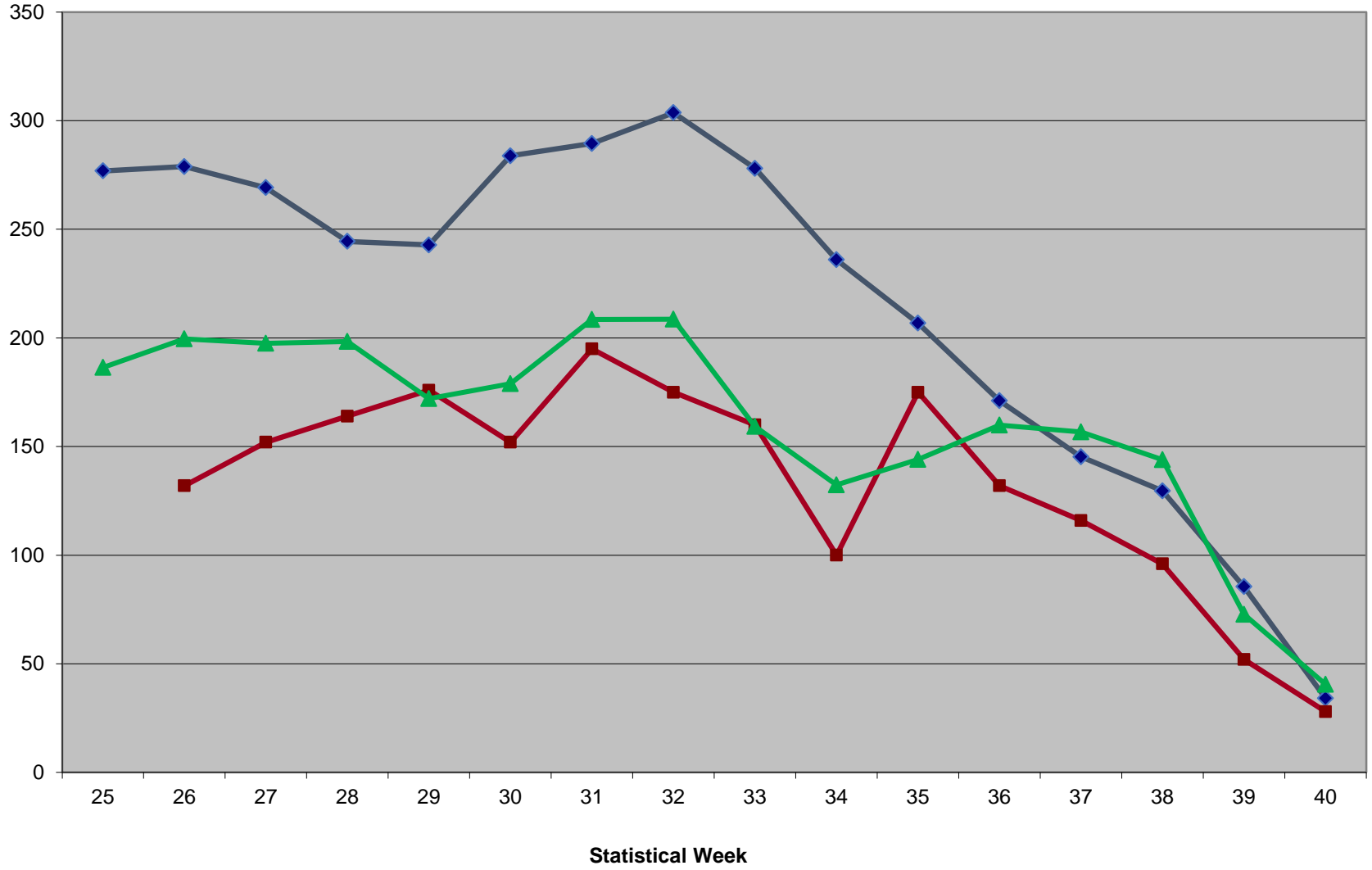


QUESTIONS?

Harvest as a percentage of weekly harvest by species Section 1-B

10-year average						
Stat Week	Chinook	Sockeye	Coho	Pink	Chum	
25	2%	56%	3%	1%	37%	
26	2%	27%	3%	8%	60%	
27	1%	18%	3%	20%	58%	
28	0%	8%	2%	36%	55%	
29	0%	6%	2%	41%	50%	
30	0%	6%	2%	56%	36%	
31	0%	6%	3%	66%	25%	
32	0%	6%	4%	77%	12%	
33	0%	4%	4%	83%	8%	
34	0%	2%	5%	83%	10%	
35	0%	2%	12%	63%	23%	
36	0%	1%	28%	32%	39%	
37	0%	0%	49%	11%	40%	
39	0%	0%	78%	0%	22%	
40	0%	0%	79%	0%	21%	

Section 1-B Drift Gillnet Boat Day Comparison 1985-2018 Avg. vs 2019



Alaskan Northern Boundary Fisheries

