

# 2019 Juneau Management Area Purse Seine

DAVE HARRIS

JUNEAU AMB

PURSE SEINE TASK FORCE

DECEMBER 3, 2019



## 2019 Juneau Management Area Purse Seine Fisheries and Pink Salmon Escapements

### Point Augusta

Chinook: 16  
 sockeye: 3,000  
 coho: 600  
 pink: 66,500  
 chum: 32,000  
 boats: 37  
 openings: 8 x 15 hours  
 SW 25-30

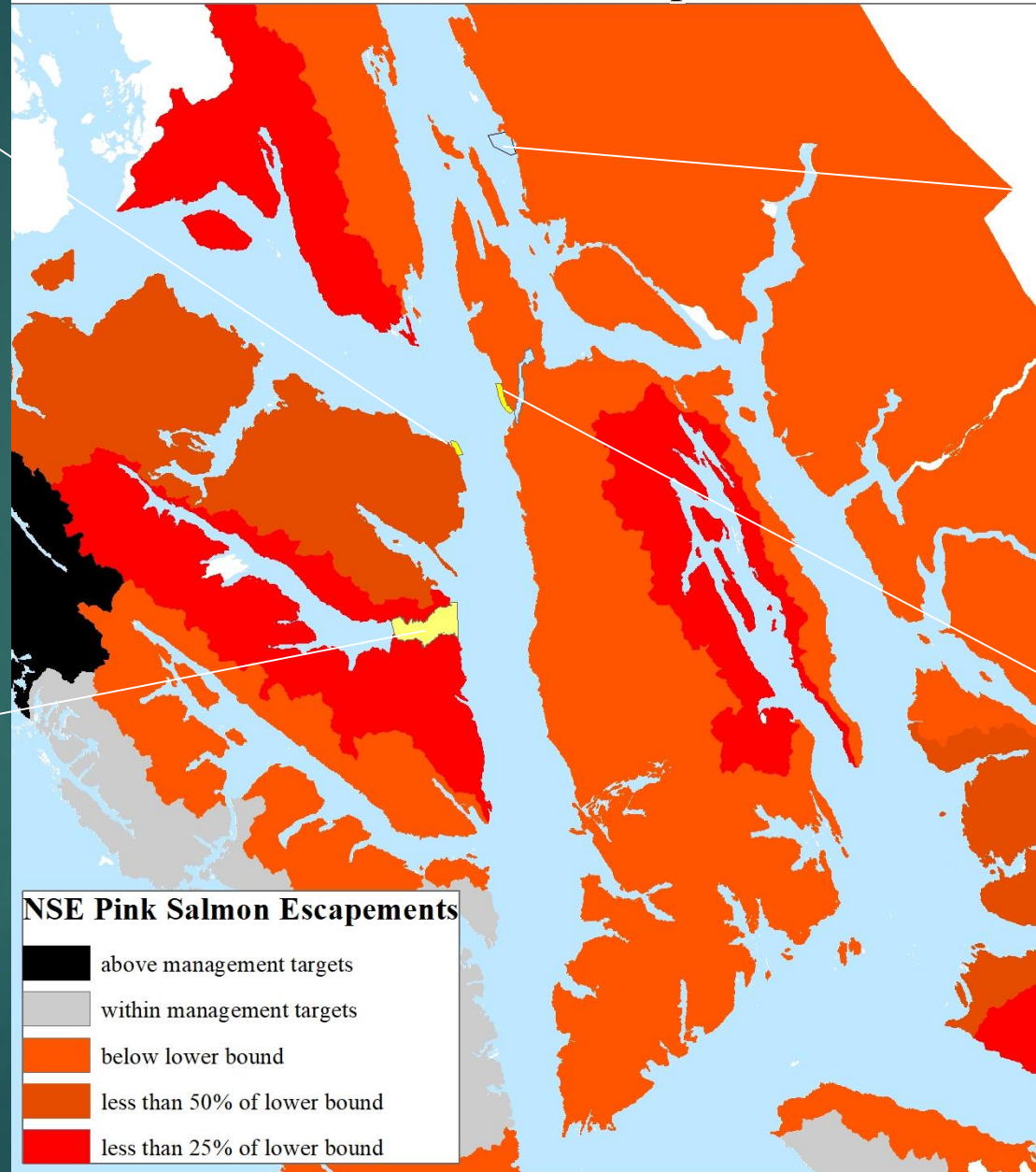
### East Tenakee Inlet

Chinook: 0  
 sockeye: 160  
 coho: 30  
 pink: 3,200  
 chum: 1,100  
 boats: 11  
 openings: 3 x 15 hours  
 SW 25-27

Amalga Harbor SHA  
 no fisheries in 2019

### Hawk Inlet Shoreline

Chinook: 4  
 sockeye: 2,500  
 coho: 250  
 pink: 35,200  
 chum: 14,100  
 openings:  
 1 x 6 hours 14 boats  
 1 x 8 hours 12 boats  
 SW 29, 30



### NSE Pink Salmon Escapements

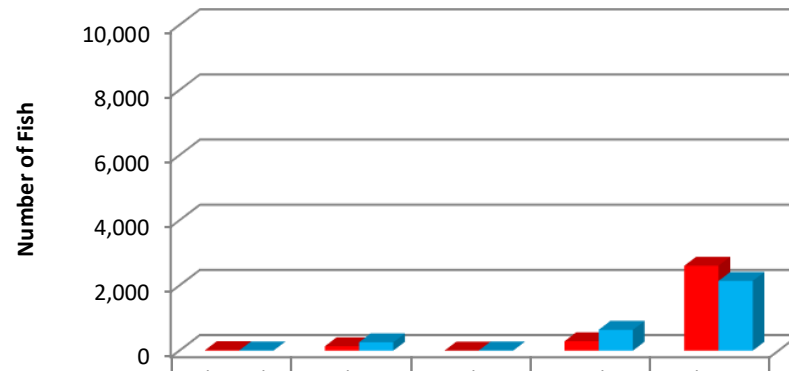
- above management targets
- within management targets
- below lower bound
- less than 50% of lower bound
- less than 25% of lower bound

0 5 10 20 30 40 50 Nautical Miles

# Hawk Inlet Test Fishery

**June 28, 2019 SW 26**

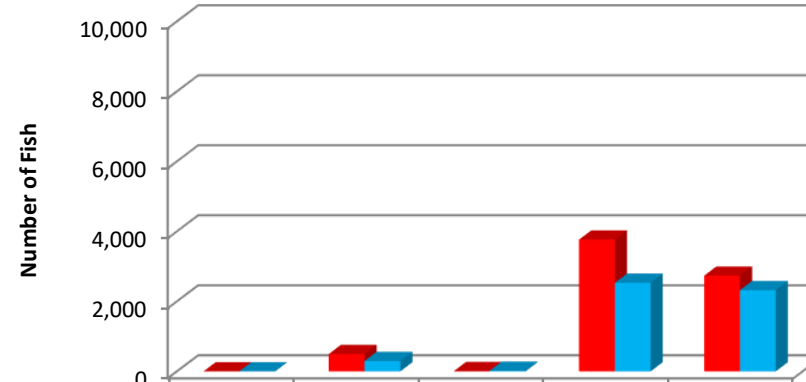
■ 2019 ■ 10-Year Average



■ 2019	15	133	2	288	2,607
■ 10-Year Average	7	257	6	639	2,140

**July 5, 2019 SW 27**

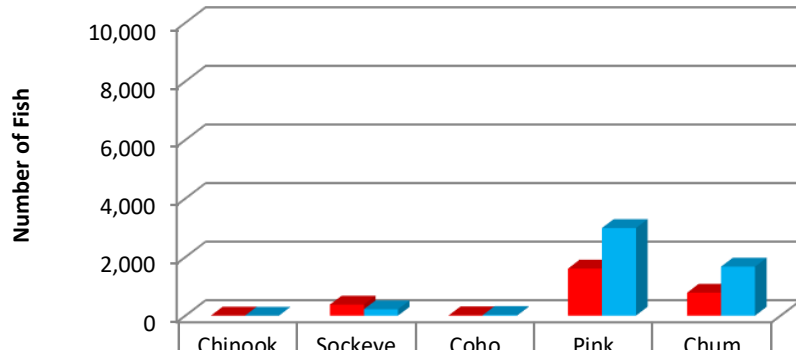
■ 2019 ■ 10-Year Average



■ 2019	2	497	9	3,767	2,735
■ 10-Year Average	3	298	19	2,532	2,321

**July 12, 2019 SW 28**

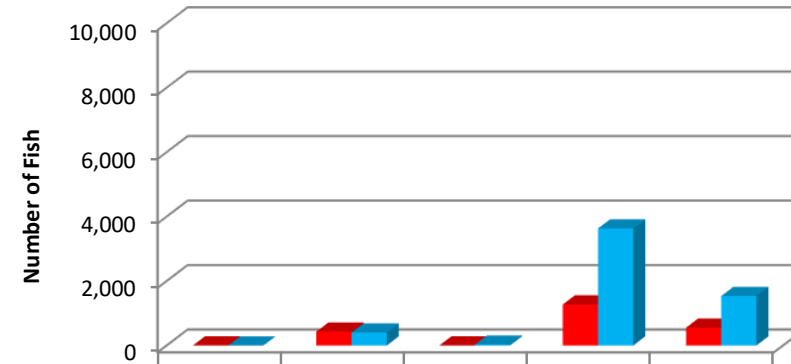
■ 2019 ■ 10-Year Average



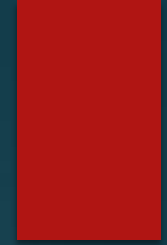
■ 2019	3	380	15	1,607	784
■ 10-Year Average	1	219	24	2,993	1,674

**July 19, 2019 SW 29**

■ 2019 ■ 10-Year Average



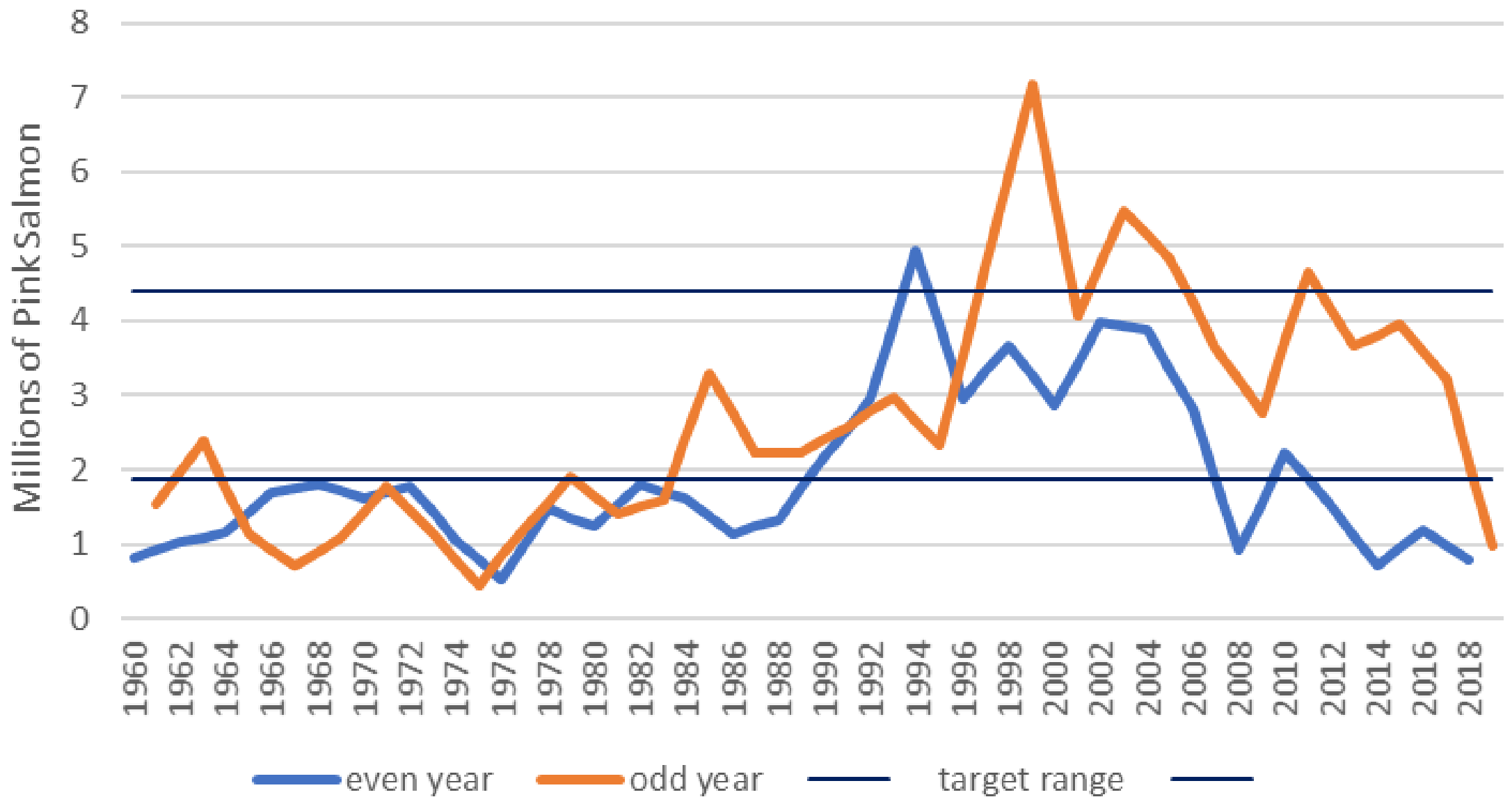
■ 2019	2	430	5	1,275	553
■ 10-Year Average	1	404	26	3,630	1,535



# 2019 Drought Conditions

Long Bay Head  
Tenakee Inlet  
August 12, 2019

# NSEI Pink Salmon Escapement Index Districts 10-15



## **2020 Juneau Management Area Expectations Poor:**

**2018 Parent year pink salmon escapements very poor**

**2019 NOAA SECM survey results very poor**

**Initial opening at Pt. Augusta Index Area June 21**

**Amalga Harbor SHA openings in July dependent on enhanced chum salmon run strength and progress towards DIPAC cost recovery goals**