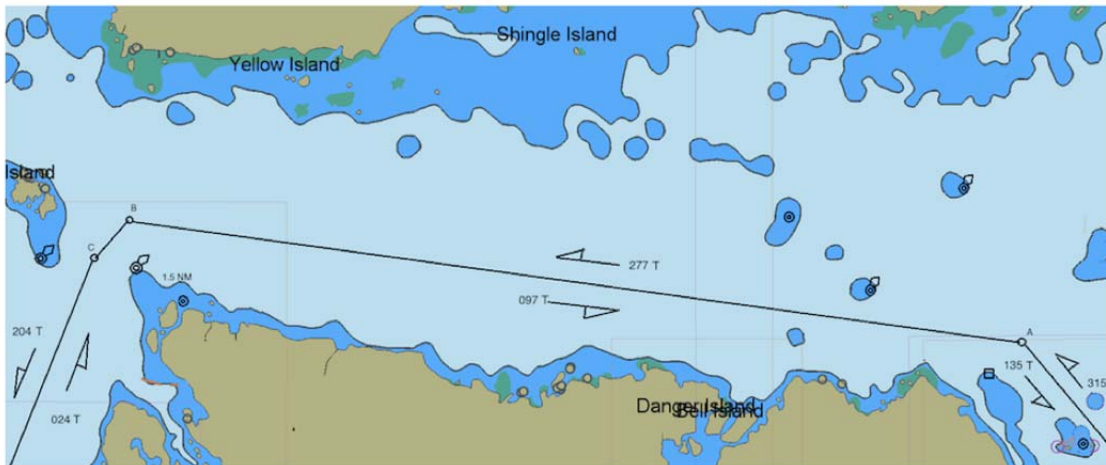


SOUTHEAST ALASKA MARINE SAFETY TASK FORCE MAY 2015
SUMNER STRAIT DEEP-DRAFT TRAFFIC STANDARD TRACKLINES
NOT FOR NAVIGATION – NOT FOR NAVIGATION – NOT FOR NAVIGATION



A: 56-21.0N / 133-09.5 W

B: 56-23.0N / 133-38.7W

C: 56-22.5N / 133-39.9 W

Voluntary vessel traffic procedures for gillnet fishing conditions and deep-draft ships. Traffic lanes, about 0.2 NM wide, are centered on the tracklines as shown.

REFERENCE COAST PILOT 8

Deep-Draft Traffic:

Secureite call 30-45 minutes prior to entering area and at regular intervals while transiting the area. Travel along tracklines as much as possible.

Deep Draft Vessels will avoid overtaking near Gillnet areas if possible

Gillnet Fishing Vessels;

Mark net end with lights and radar reflectors;
Monitor VHF CH 13 & 16 for broadcasts;
Warn other gillnetters if they appear in the traffic lane and deep-draft ships are approaching.
Do not place sleep sets within or adjacent to tracklines.
Provide for two-way traffic of large vessels along the designated tracklines.